

AVACOM

H60 Series H.264 IP Cameras Quick Start Guide



Installation & Configuration Guide
With USA Technical Support & Warranty Information

AVACOMTECH INC.

www.avacomtech.com

Hardware Installation

Please check to see that you have the following:

1. H602x or H608x device
2. Antenna (H608xW/AW only)
3. Ethernet cable
4. 12V power adapter
5. Mounting bracket and screws
6. CD-ROM with setup software



You will also need:

1. A computer with a CD-ROM drive or active Internet connection
2. A WiFi router with at least one other available Ethernet port
3. A screwdriver

Preparation for Plug & Play Installation or Network/WiFi settings

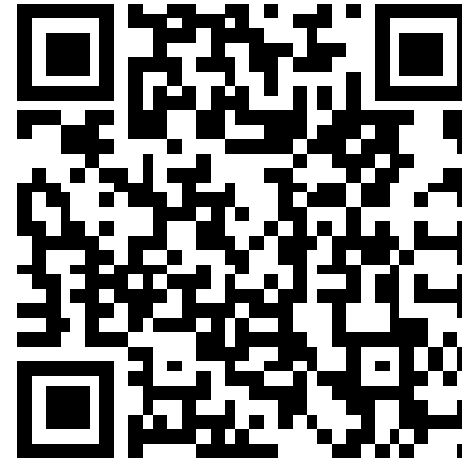
1. Connect Ethernet cable between the camera and your router or WiFi router
2. Connect the antenna to camera (optional)
3. Connect the 12V power adapter to camera and plug it into a power outlet

Android/iPhone/iPad APP Plug & Play Installation

1. Make sure your Android phone, iPhone or iPad has installed Barcode Scanner APP
2. Scan below QR code to install APP on Android or iPhone/iPad



Android APP



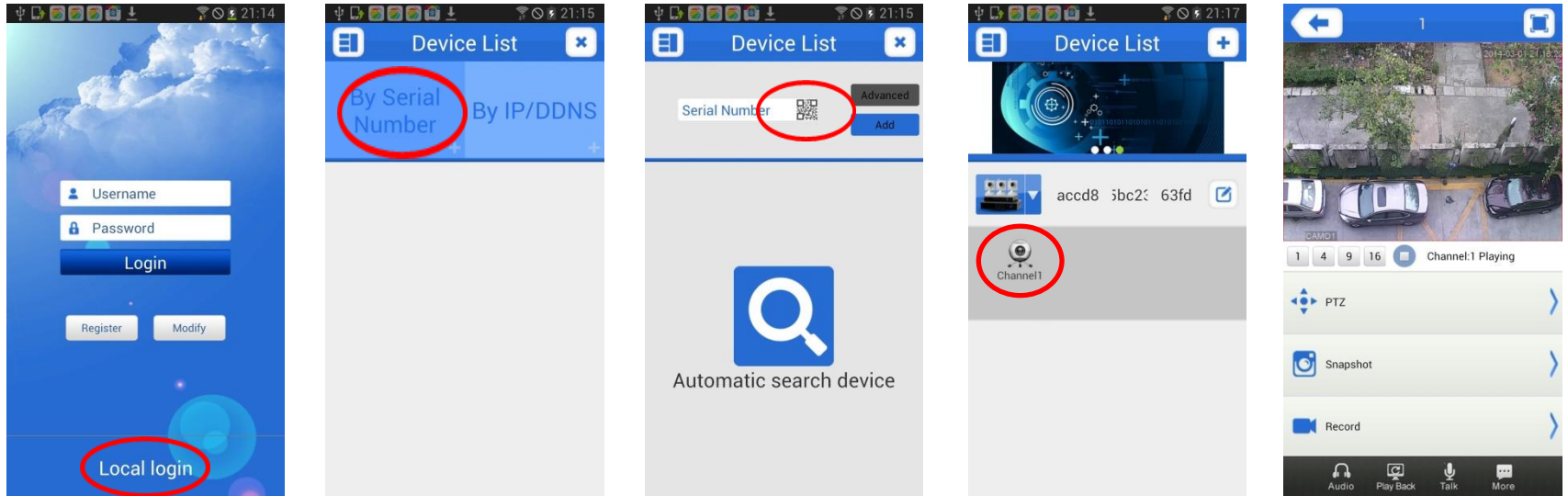
iPhone/iPad APP

3. Scan S/N QR code, the S/N QR code can be found on box or camera



Android/iPhone/iPad APP Plug & Play Installation

3. For Android phone, select “Local Login” , select “By Serial Number”, scan S/N QR code on camera or box, select “channel 1” to play the video



You can also register an account and use the account to login to different devices

Android/iPhone/iPad APP Plug & Play Installation

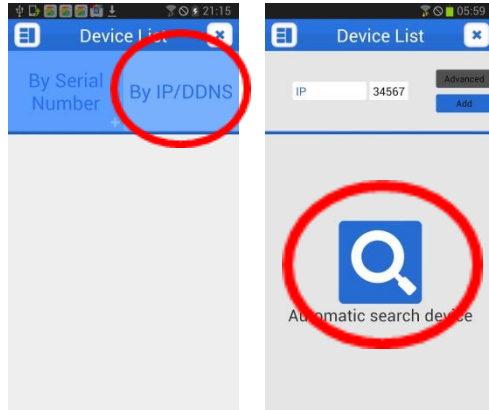
4. For iPhone/iPad, select “By Device” , select “Add”, scan S/N QR code on camera or box, then select the camera to play the video



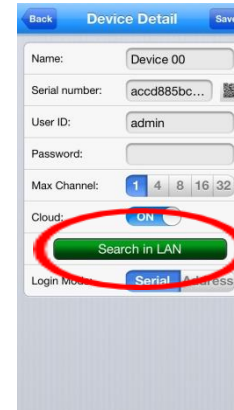
Search Camera IP Address (optional)

1. Search camera IP address on Android or iPhone/iPad

Android:

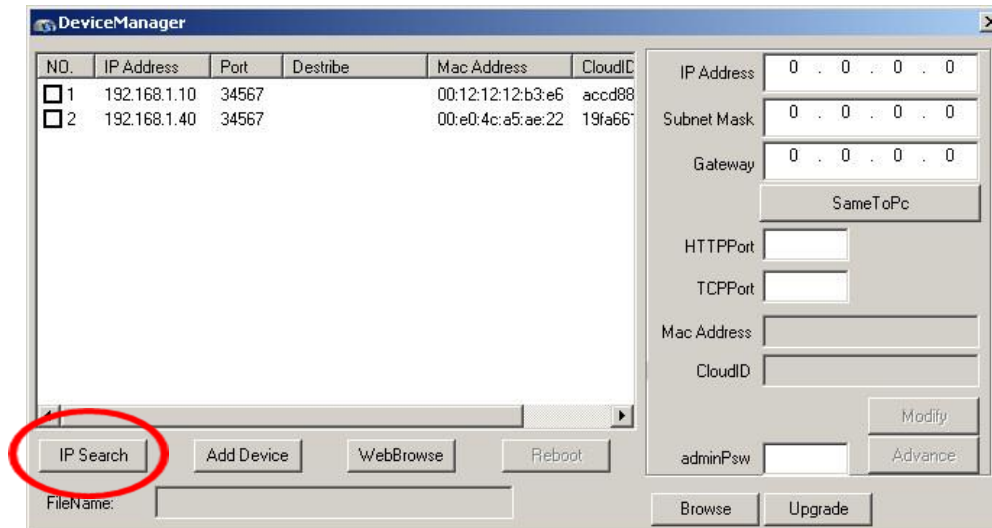


iPhone:



2. Search for the camera IP address on Windows XP/7

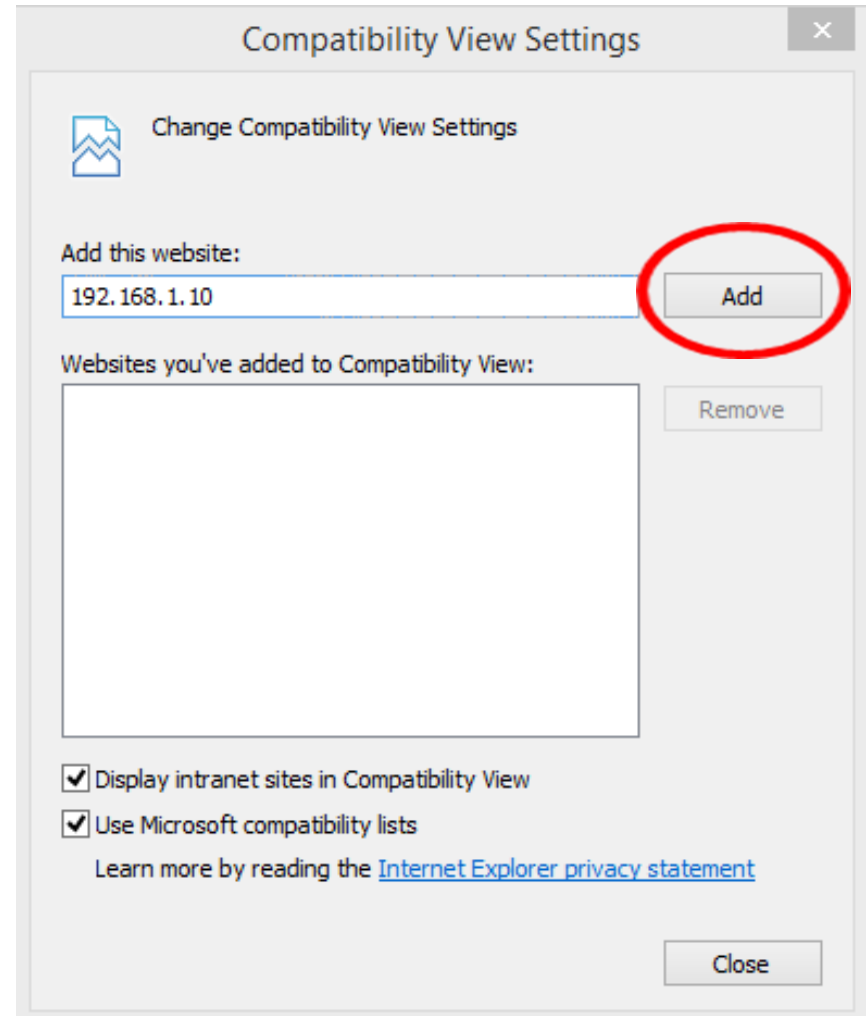
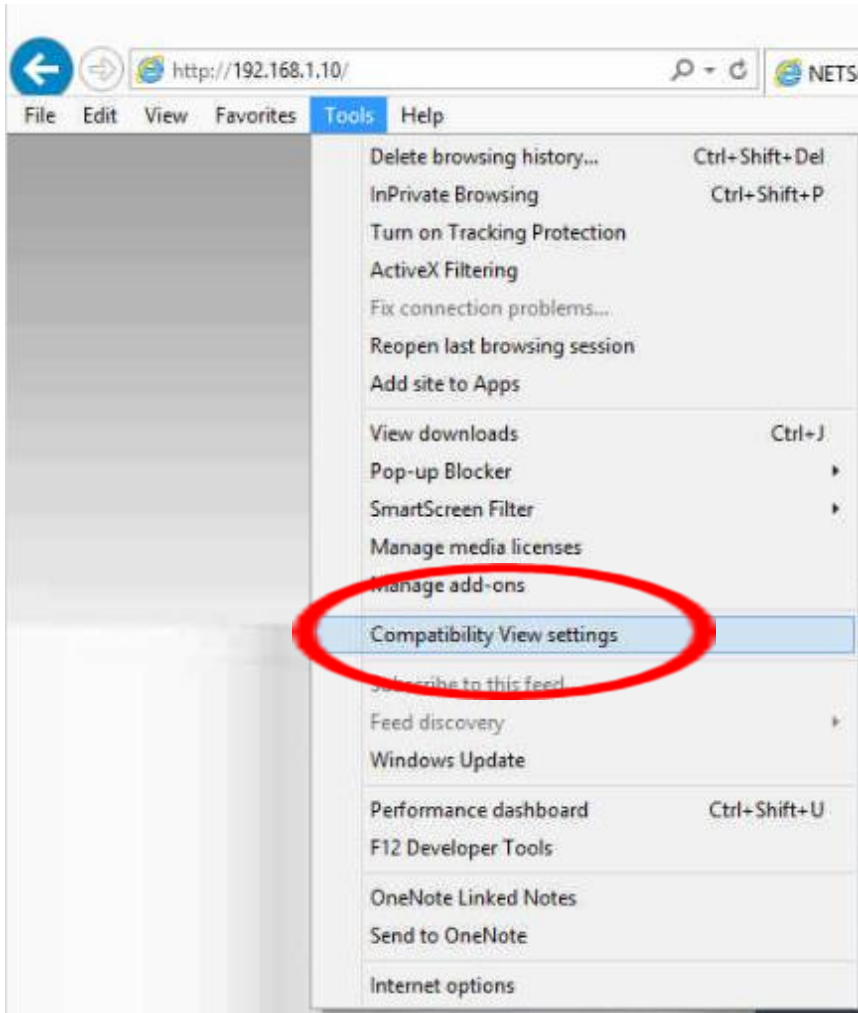
Run DeviceManager on the CD, click “IP search”



DeviceManager is a Windows 32bit software and may not be compatible with Windows 8/8.1

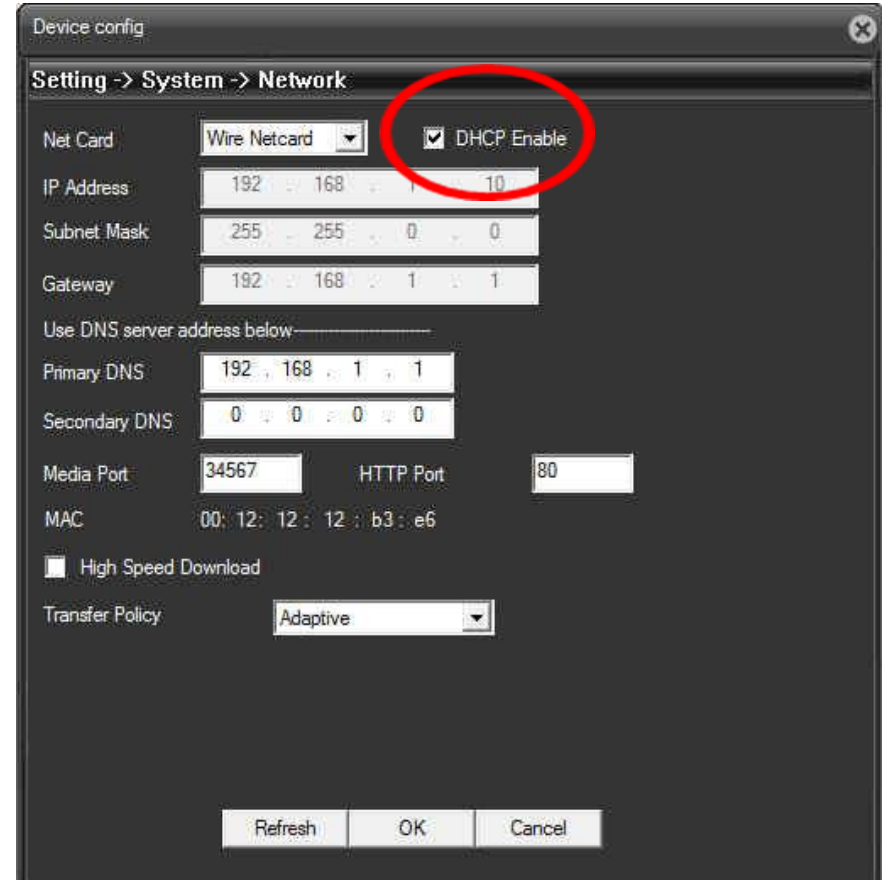
Setup Internet Explorer Compatibility View (optional)

1. Enter the camera IP address in the Windows Internet Explorer address bar
Add the IP address to Compatibility View Settings if Windows blocks the IP address



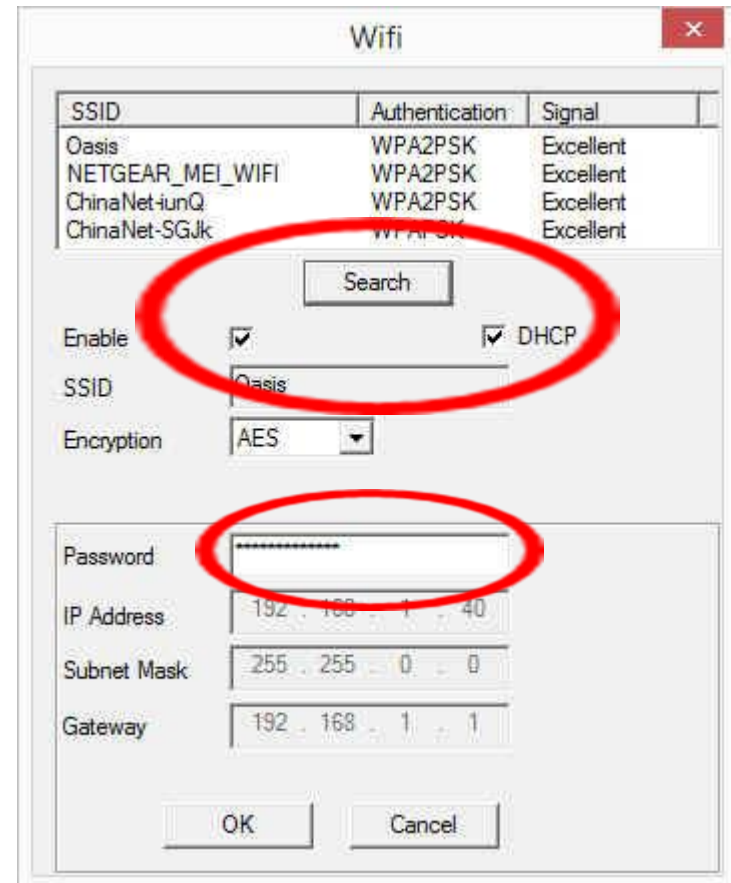
Setup Fixed Network IP Address (optional)

1. Enter DeviceCfg->Network menu on WebUI, change RJ45 port to fixed IP if needed



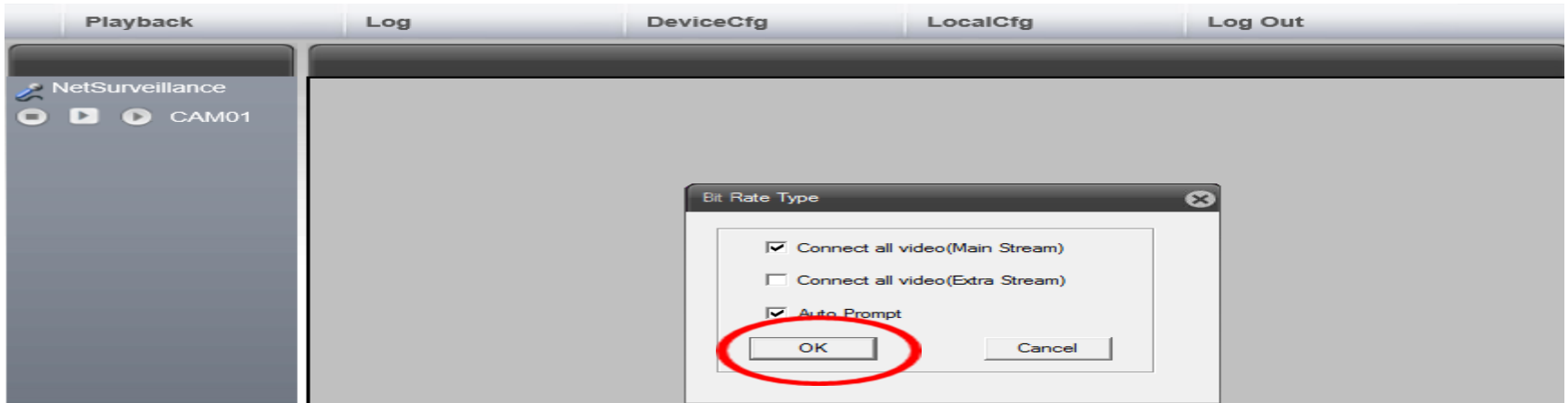
Setup WiFi Password or IP address (optional)

1. Enter DeviceCfg->NetService menu on WebUI, change WiFi settings if needed

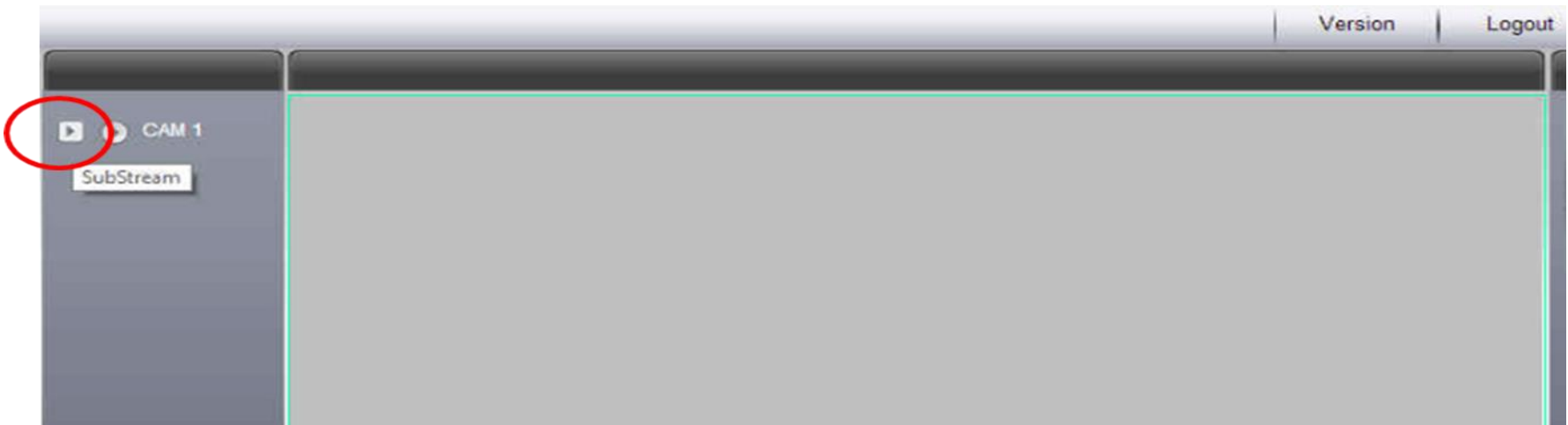


View Video from Windows IE, Safari, Firefox, Chrome(optional)

1. Enter camera IP address on Windows IE, select main steam or extra stream, enable QuickTime to play the video



2. For Safari / Firefox / Chrome , select SubStream, enable QuickTime to play the video



View Video from Blue Iris (optional)

1. Enter the IP address, select camera model “Avacom H60xx port 34567”

Network IP camera configuration

Address

IP or host name HTTP port User

Media/video/RTSP port Password

Video

Path

Params

Camera

Network options

Receive buffer (MB)

☐ Use RTP/UDP ports:

☐ Skip initial DNS and reachability tests

☐ Framerate limiting compatibility mode

Other options

☐ JPEG decoder compatibility mode

☐ Trigger using camera's digital input or motion

Audio

Path

Format

Click Cancel for USB or analog source

Warranty Information

2 year Limited Hardware Warranty

AVACOM guarantees to the customer that this unit will conform to its published specifications and will be free from defects in material and workmanship at the time of delivery and for a period of two years thereafter. Without limiting the foregoing, this warranty does not cover any defect resulting from (a) any unit sold by an entity other than AVACOM, (b) any design or specification supplied by an entity other than AVACOM, (c) non-observance of technical operating parameters (e.g. exceeding limiting values) or (d) misuse, abuse, using in abnormal conditions or alterations of any kind.

Please call AVACOM support line to obtain a Return Material Authorization (RMA), customer needs to provide a copy of Amazon shipping slip and product serial number. Ship the unit with a valid RMA to below address for repair. Customer needs to bear one way shipping cost.

1 Month Replacement, Refund

For buying from amazon.com or eBay.com, please reference to Amazon or eBay policies.

For buying from avacomtech.com, please reference to our website www.avacomtech.com.

Contact Information:

AVACOMTECH INC.

135 Civic Center Dr, Ste 205, National City, CA 91950 USA

Tel: +1-619-336-0392, Fax: +1-619-336-0492

Email: support@avacomtech.com

Thank you for choosing AVACOM products

www.avacomtech.com