

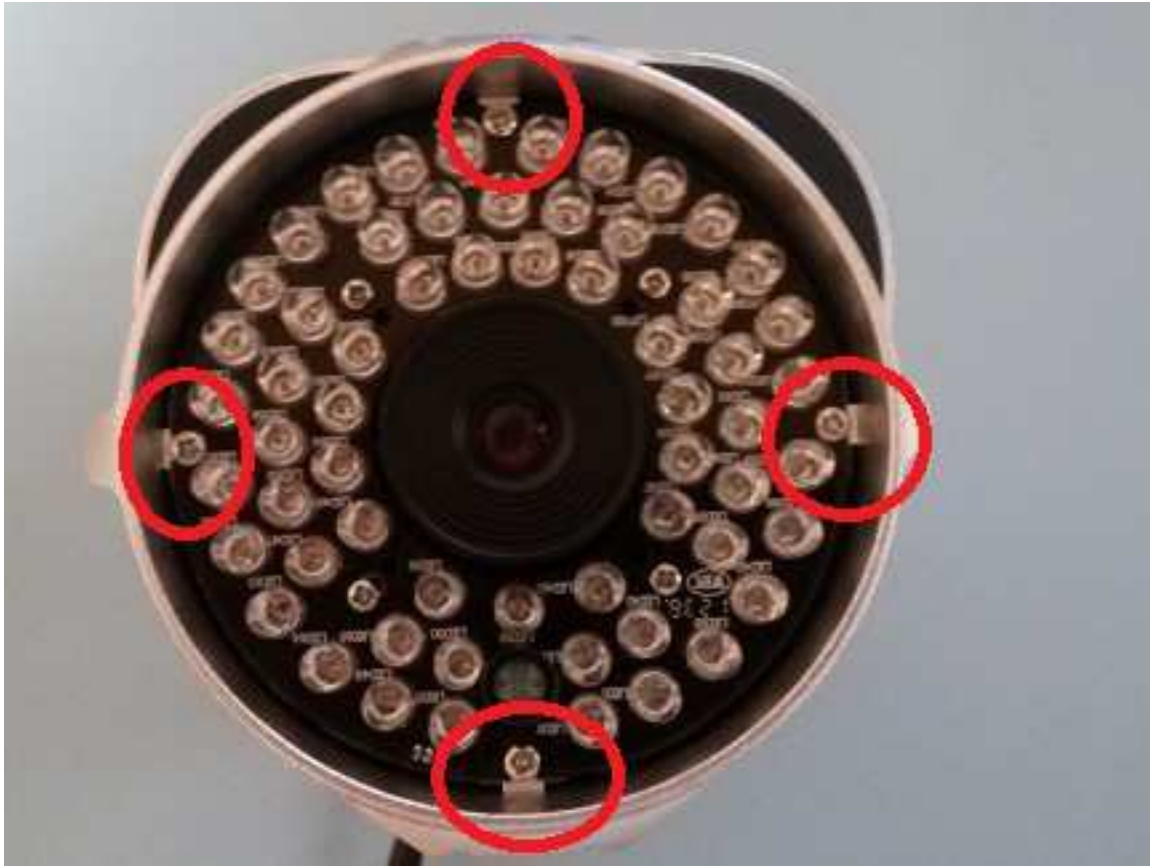
# Installing a 2.8mm Lens



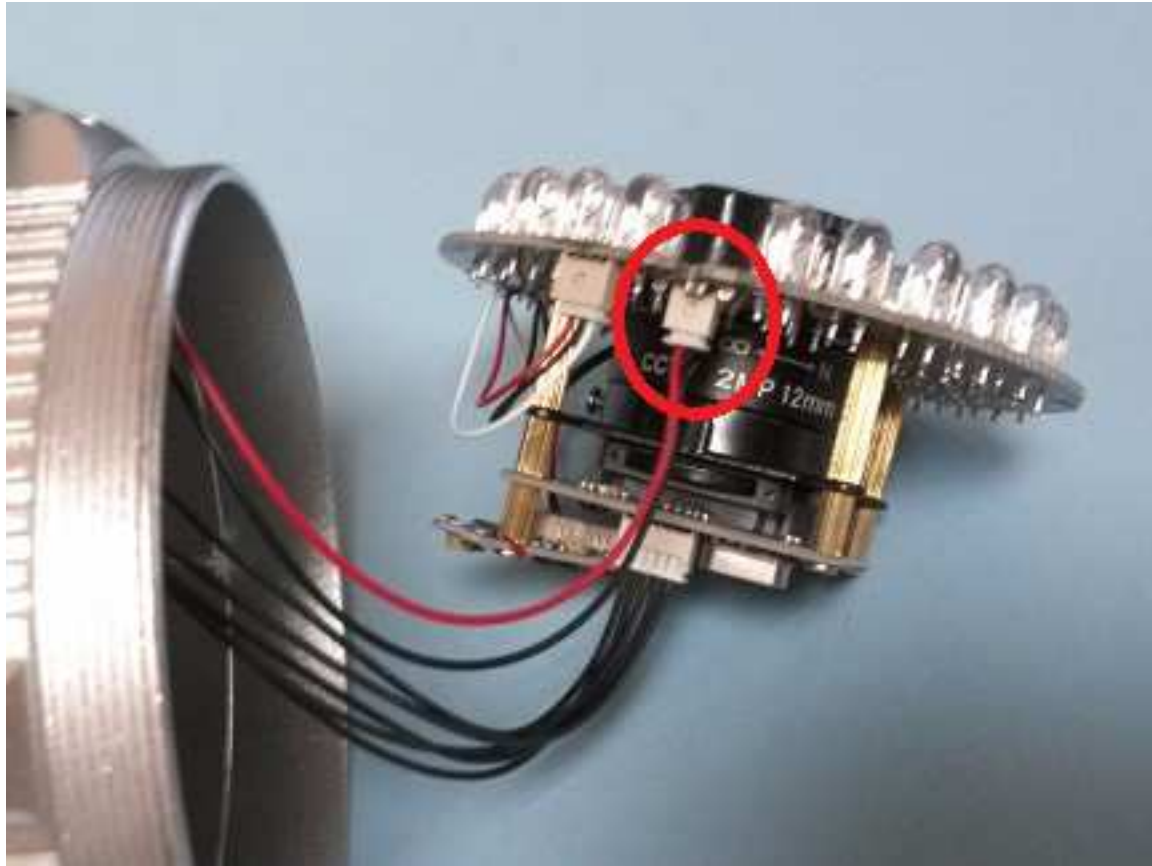
Slide back or remove sun shield



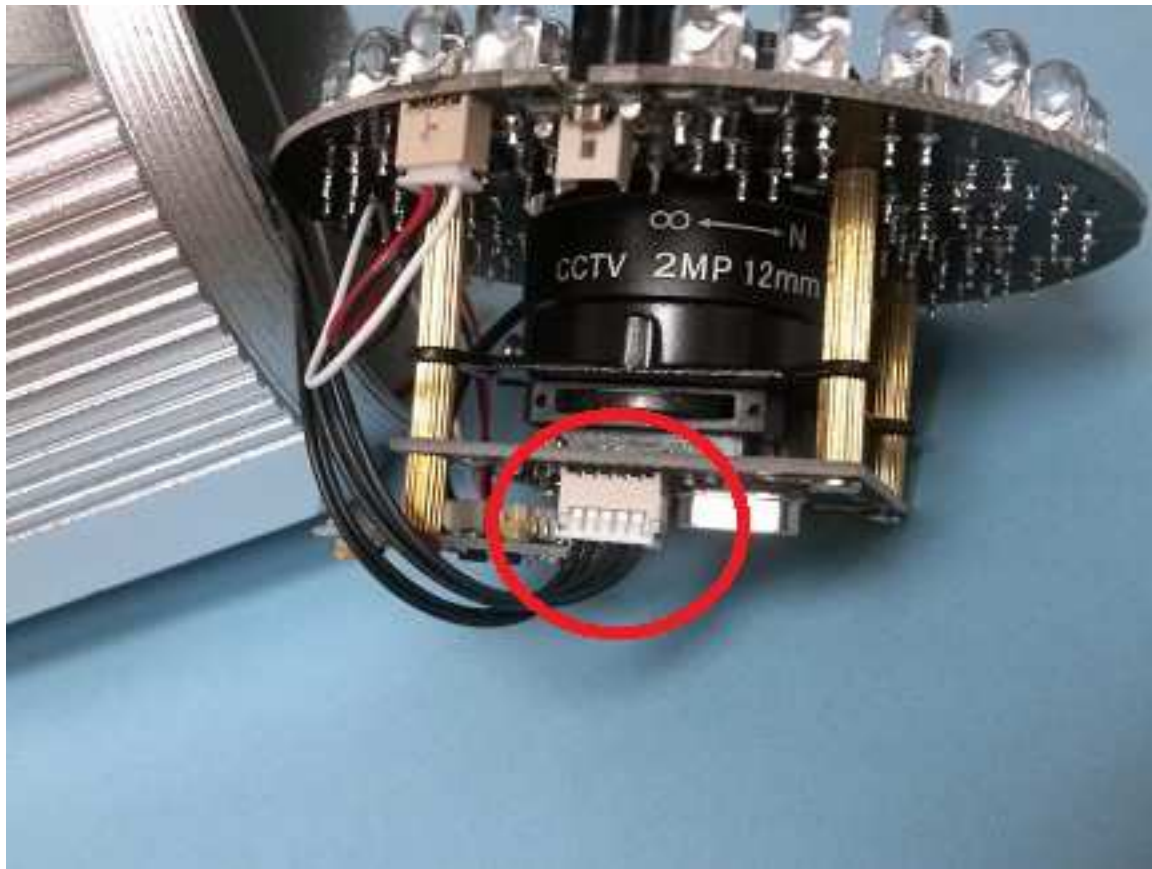
**Remove front cap by turning counter-clockwise**



**Remove LED board / lens assembly retention screws**



**Disconnect LED power cable**

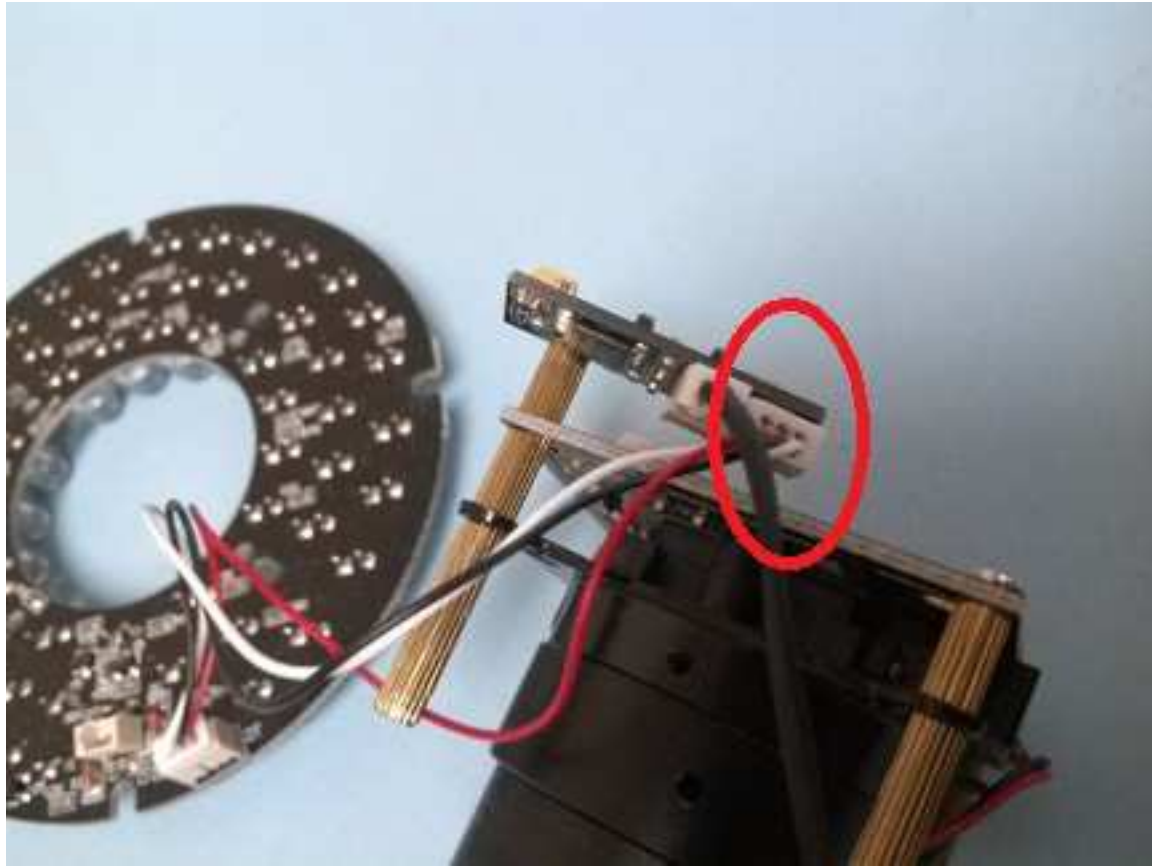


**Disconnect motherboard interface cable**



**Remove lens assembly retention screws**





**Disconnect LED board control cable**



**Remove lens lock screw**

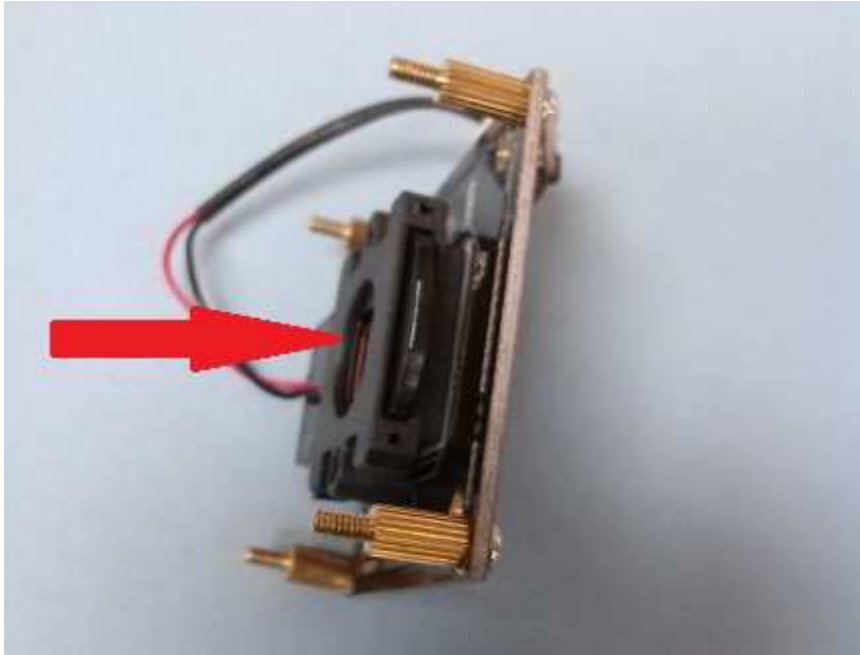




**Remove long stand-offs**



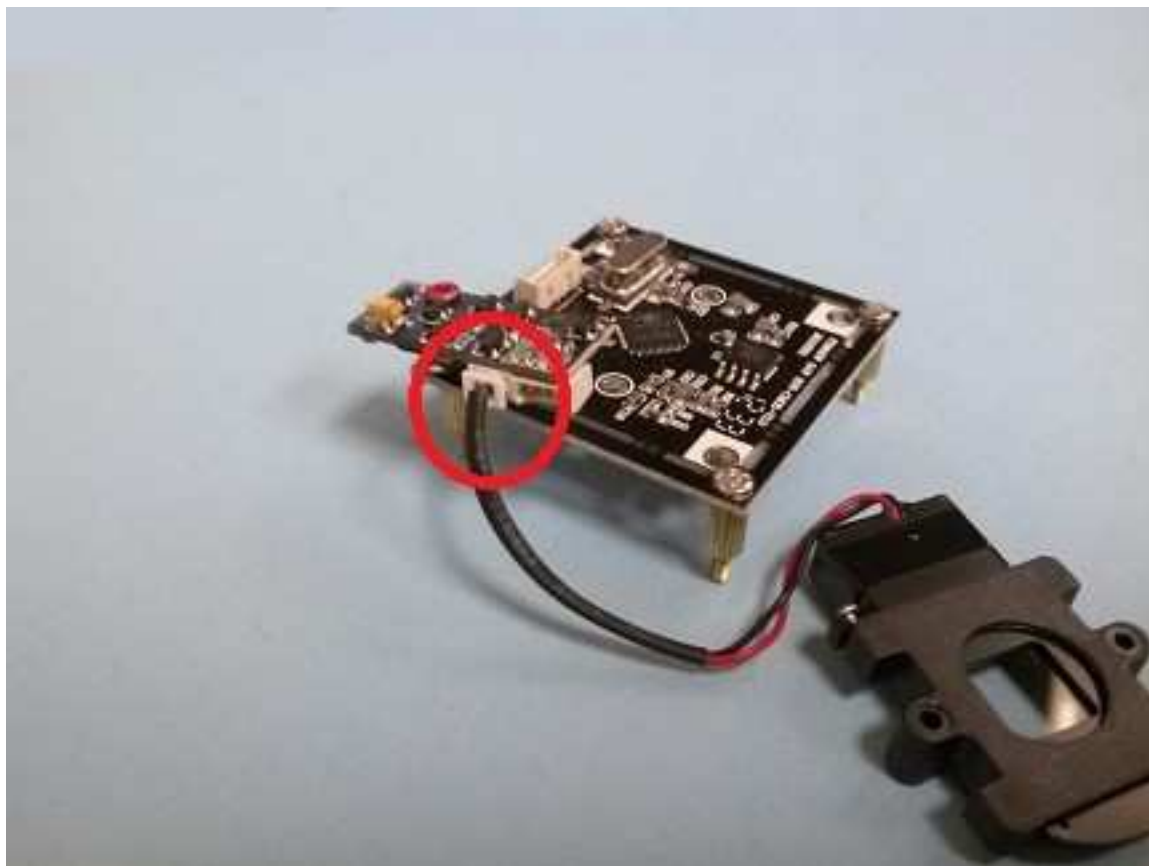
**Remove lens seat**



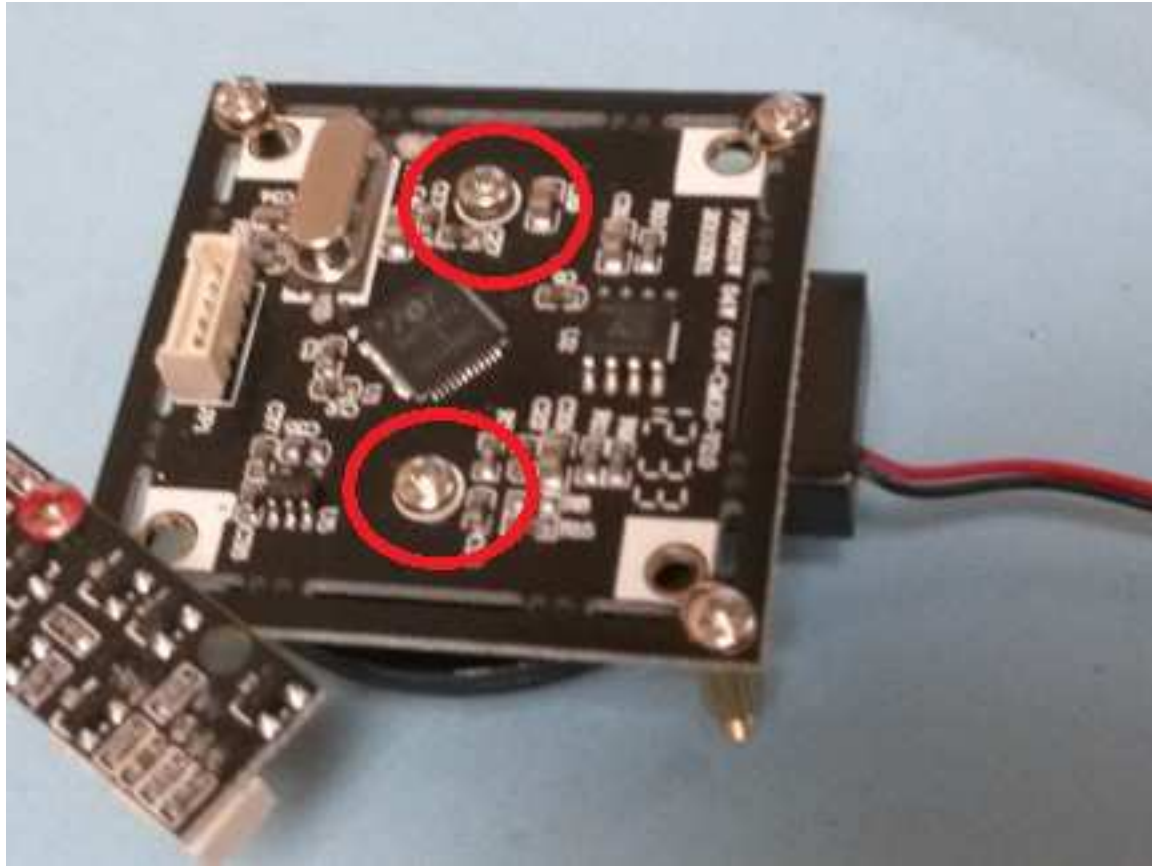
**IR cut-out filter assembly**



**Remove IR cut-out filter retention screws**



**Disconnect IR cut-out filter control cable**

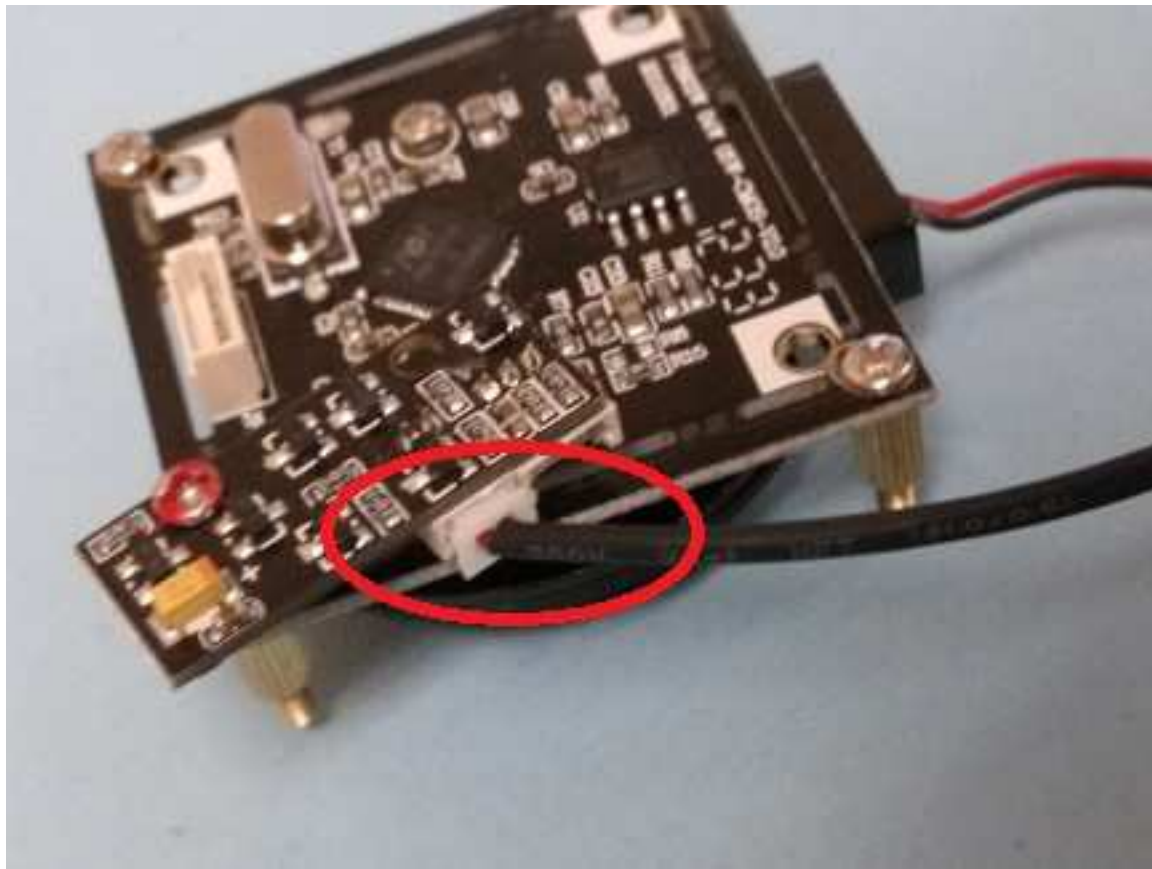


**Install 2.8mm IR cut-out filter**



**2.8mm IR cut-out filter / lens seat**

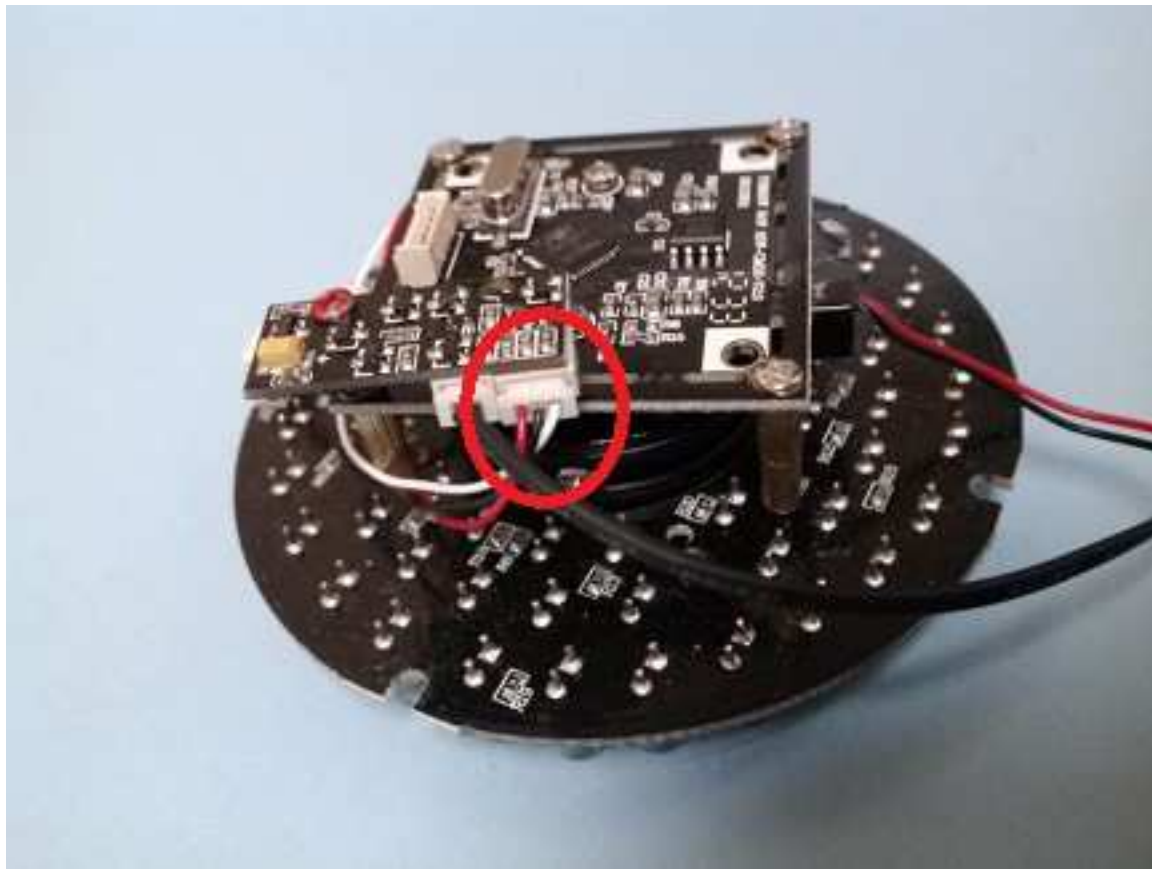




**Connect IR cut-out filter control cable**



**Install short stand-offs, 2.8mm lens, and lens lock screw**



**Connect LED board control cable**



**Install lens assembly retention screws**



**Connect motherboard interface cable / LED power cable**



**Install LED board / lens assembly retention screws**

**Power on the camera and log in to viewing screen**

**Turn lens clockwise/counterclockwise to focus**

**Reinstall front cap**

**Move sunscreen back into position**