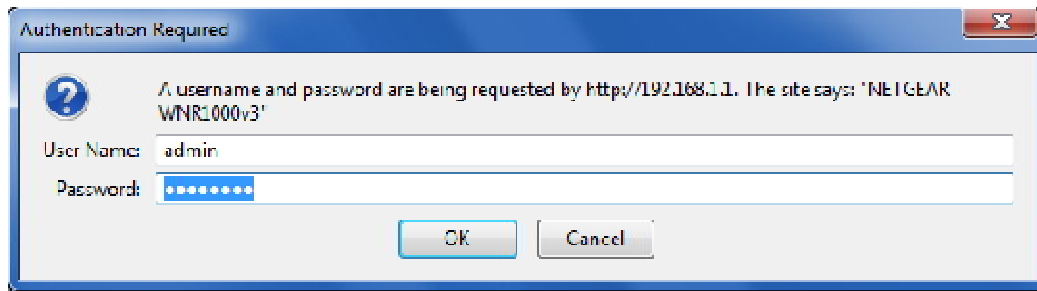
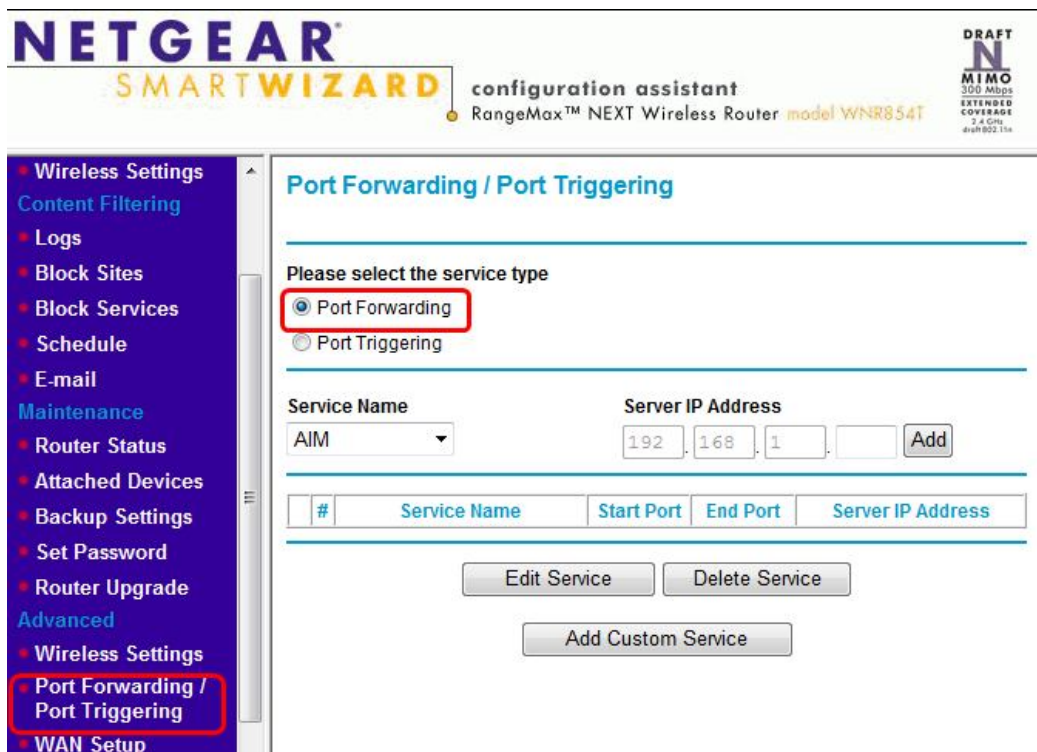


## Port Forwarding on Netgear Router

**Step 1:** Open a web browser and enter the IP address of your router (192.168.1.1 by default). Enter username (admin by default) and password (password by default).



**Step 2:** Click **Port Forwarding/Port Triggering**. Select **Port Forwarding**



**Step 3:** From the drop-down list, select **HTTP**. Click **Add Service** button.

In the **Service Name**, type a name, like "camera"

In the **Service Type**, select TCP/UDP.

In the **Starting Port**, enter camera's port number. Eg:8090

In the **Ending Port**, enter camera's port number. Eg:8090

In the **Server IP Address**, enter camera's IP address. Eg:192.168.1.5

Click **Apply**. You may need to restart the router for the changes to take effect.

You can check port is forwarded successful or not on

<http://www.yougetsignal.com/tools/open-ports/> .

**you get signal**

T3/CT3 Compatible Interface Module In Stock.Same Day Shipping.  
[www.ICTCompany.com](http://www.ICTCompany.com) AdChoices

### Port Forwarding Tester

your external address  
14.153.222.148

open port finder

Remote Address  Port Number

☐ Use Current IP

Port 8090 is open on 14.153.222.148.

#### common ports

- 21 FTP
- 22 SSH
- 23 TELNET
- 25 SMTP
- 53 DNS
- 80 HTTP
- 110 POP3
- 115 SFTP
- 135 RPC
- 139 NetBIOS
- 143 IMAP
- 194 IRC
- 443 SSL
- 445 SMB
- 1433 MSSQL

**Step 3:** View camera over Internet by external IP address or host name and port number.

Eg: <http://14.153.222.148:8090>

Real-time IP Camera Monitoring System

English Spanish Deutsch French Italian Polski 简体中文 繁体中文

ActiveX Mode (For IE Browser)

User

Password

Login