



avacom
ADVANCED VISION & AUDIO

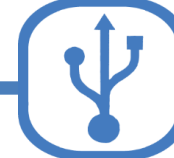
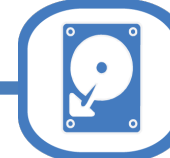
NVR-1108P / NVR-5116P-V3

H.264 Network Video Recorder

Quick Start Guide

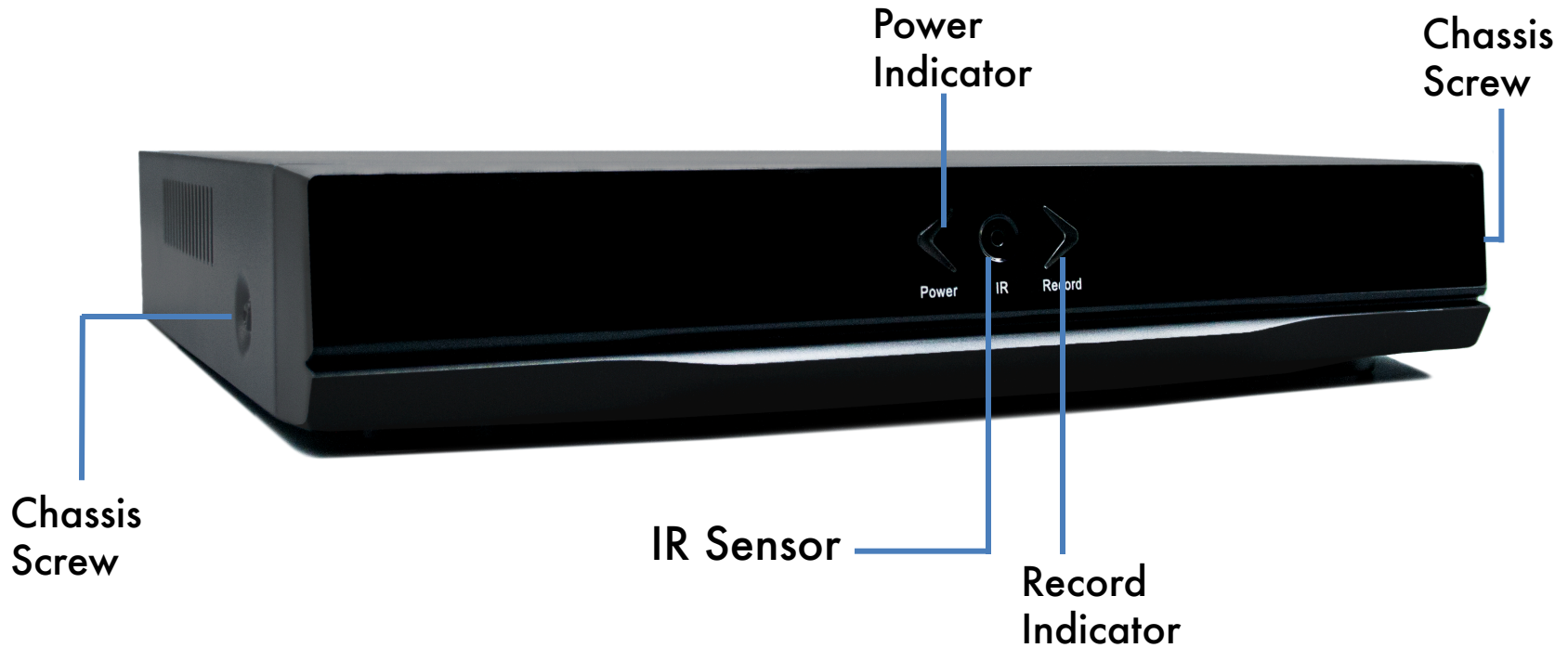


Installation
Configuration
Warranty Information



Device Layout

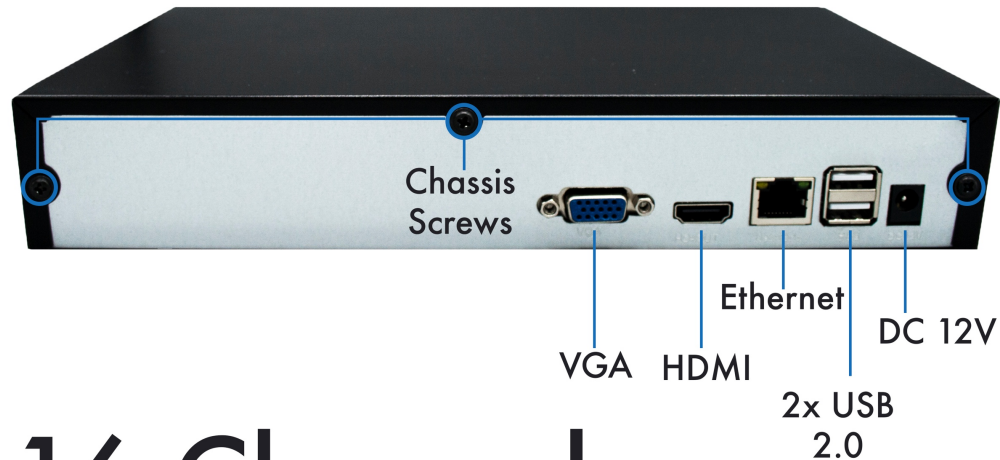
Front Panel



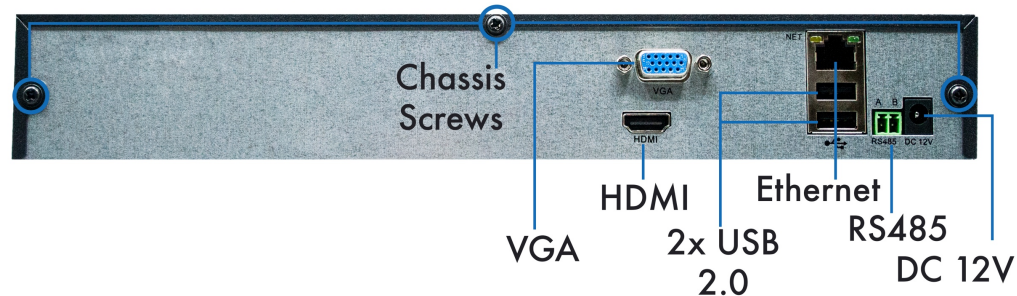
Device Layout (cont.)

Rear Panel

8 Channel



16 Channel



What's in the Box:

NVR	
Mouse	
HDMI Cable	
12 VDC Power Supply	
HDD Mounting Screws (4)	
Quick Start Guide	

What you will need:

1. VGA or HDMI monitor



2. Router with at least one available Ethernet port



3. Phillips head screwdriver
(If your NVR goes without HDD)



Hardware Installation

How to add HDD to your NVR

1. Remove 5 screws on the sides and back panel of the NVR.



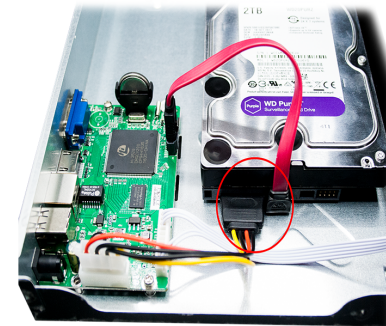
2. Slide the NVR cover off (as shown in the image):



3. Mount the HDD using the 4 screws that came with the NVR, through the base of the chassis:



4. Connect Power And Data cables



4. Once the HDD has been installed
Slide the top cover onto the NVR and re-insert the screws



How to connect your NVR to your network.

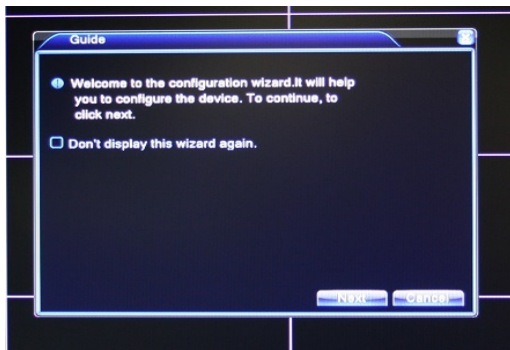
NOTE: Before powering on the NVR, ensure that you have HDD installed if you intend on recording camera footage.

1. Connect the power adapter to the back of the NVR.
2. Connect the included mouse into the USB port in the back of the NVR.
3. Connect either an HDMI cable or a VGA cable from the NVR to your display.
4. Ensure the Red Power Light is lit on the front of the NVR.

Settings

When the NVR is turned ON, the Configuration Wizard will appear

1. **Configuration Wizard:**
'Welcome' screen - Click on Next.



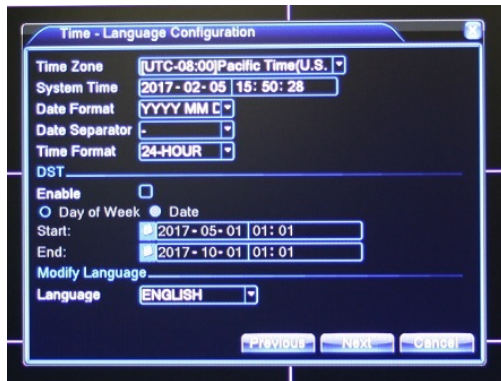
2. **System Login:** Use default Username and Password to access the configuration menu.
(Username: admin, Password: <blank>)



Settings (cont.)

3. Time - Language Configuration:

Check to see that Time and Time Zone are correct



4. **Install NVR Mobile app:** Scan QR code for Android or iPhone use or Install AvacomPlus app to monitor cameras via the Web.



AvacomPlus app



iPhone



Android

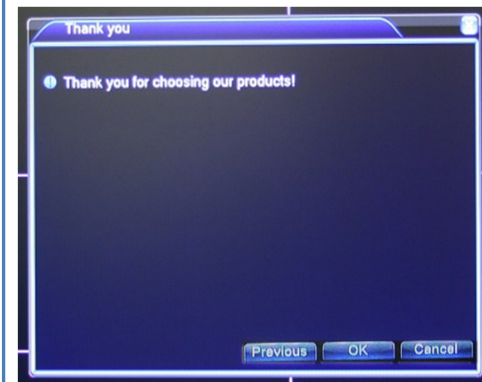
5. **IP Channel Config Wizard:** Add, Delete, Enable/Disable and modify Devices attached to the Network that will be monitored by the NVR.



1. Click 'Search' to find the cameras on your network
2. Click 'Add' to add the cameras to the device list (lower box)
3. Highlight camera in the device list and change the username/password if necessary
4. Click 'Apply' when all cameras have been added

6. Configuration Wizard 'Thank You' screen:

Click on OK.



Warranty Information

1 Year Limited Hardware Warranty

AVACOM guarantees to the customer that this unit will conform to its published specifications and will be free from defects in material and workmanship at the time of delivery and for a period of two years thereafter. Without limiting the foregoing, this warranty does not cover any defect resulting from (a) any unit sold by an entity other than AVACOM, (b) any design or specification supplied by an entity other than AVACOM, (c) non-observance of technical operating parameters (e.g. exceeding limiting values) or (d) misuse, abuse, using in abnormal conditions or alterations of any kind. Please call AVACOM Support Line to obtain a Return Material Authorization (RMA). Customer needs to provide a copy of Shipping Slip and Product Serial Number. Ship the unit with a valid RMA to below address for repair. Customer needs to bear one way shipping cost.

1 Month Replacement, Refund

For buying from amazon.com or eBay.com, please reference to Amazon or eBay policies. For buying from www.avacomtech.com, please reference to our website www.avacomtech.com.

10 Year Telephone and Remote Desktop Technical support

Contact Information

AVACOMTECH INC

135 Civic Center Dr, Ste 101

National City, CA 91950

Tel: 619.336.0392, Fax: 619.336.0492

Email: support@avacomtech.com

Thank you for choosing AVACOM

www.avacomtech.com